

How you can help

Become a Blanketeer

Make a blanket, quilt or afghan and donate it to our chapter. We will deliver your blanket to a child in need in Crawford, Sebastian and LeFlore counties.

Become a Drop-off site

Drop-off sites are local businesses or community areas that are convenient for our Blanketeers and donors to drop off their donations. Volunteers will come and pick up those items on a regular basis.

Donate your Time

- Organize a Make a Blanket Day
- Pick up donated blankets
- Deliver finished blankets

Donate Other Gifts

- Fabric and yarn that are new, unused, washable and free of smoke and pet hair are welcome
- We prefer cotton and flannel fabrics, and we also accept plush fleece that is at least 1.5 yards long
- Monetary gifts are used for fabric, fleece, yarn, scissors, and labels

Calling all Blanketeers!

Who are Blanketeers?

Youth groups Individuals
Scout troops Sewing guilds
Community service groups

Anyone who likes to sew, quilt, knit, crochet, or tie fleece!

Drop-off Sites

- Central Sewing Center (Fort Smith)
- Crooked Creek Quilt Shop (Greenwood)
- Dot's Quilt Shop (Poteau)
- Sweet Sewing Notions (Alma)
- Monthly work day

Recipients include children at

- Hamilton Center
- Next Step Homeless Services
- Community Rescue Mission
- Sleep in Heavenly Peace
- Heart to Heart Pregnancy Center
- 1st Choice Pregnancy Center
- 188th Airman & Family Readiness
- LeFlore County Child Advocacy Ctr
- LeFlore County Children's Services
- Fostering Change
- Individual families

**The more blankets we collect,
the more children we support!**

Our Mission

Provide love, a sense of security, warmth and comfort to children in need through the gifts of new, handmade blankets lovingly created by volunteer "Blanketeers"

Provide a rewarding and fun service opportunity for interested individuals and groups in local communities



Tracy Long, Chapter Coordinator
Western Arkansas Chapter
479-462-7264

ProjectLinusWestArk@yahoo.com
ProjectLinusWesternArkansas.org

Blanket Guidelines

New, Handmade, Washable

We accept handmade quilts, blankets and afghans for children up to 18 years old. They should be crafted from age-appropriate fabric or yarn and contain no buttons or decorations. Low loft batting is preferred, and finished blankets should be able to withstand frequent washing.

Recommended Sizes

Baby	36"x36" or larger
6-12 yrs old	40"x60"
13-18 yrs old	65"x90"

Recommended Fleece Yardage

6-12 yrs old	1.5 yards per layer
13-18 yrs old	2 yards per layer

Afghans

- Use small crochet hooks or knitting needles and soft baby yarn
- Weave in all yarn ends
- Must be washable

Quilts

- Make from cotton or flannel
- Secure batting by tying or quilting every 4"

Fleece Guidelines

Preparing the Fleece

- First, cut off all selvage edges
- Cut out corners before cutting fringe
- Cut fringe straight and consistently, all the same length, and all the same width
- If more than one person is cutting fringe, ensure everyone cuts the same length and width

It's most important that pre-stitched edges and selvages are removed from the fleece before blanket-making begins.

We accept both single-layer fleece and double-layer fleece blankets, and we prefer those without knots.

Crocheting around the edge of the fleece, within pre-existing stitching or not, is also very appreciated by our children!

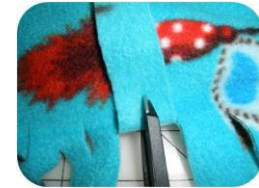
For more blanket ideas and designs, follow us on Facebook, Pinterest, and Instagram.



Single/Double Layer Fleece

Pulled-Through Edge

- Cut 4" squares from corners
- Make 4" deep cuts, 1" apart from each other, all of the way around.
- Fold each strip up to where it meets the body of the blanket. Cut a small hole in the middle of the strip.
- Pull the strip through the hole and tighten. Repeat all the way around.



Crocheted-Edge Fleece

Preparing the Fleece

- A skip stitch blade will be helpful if you need to create holes in the edge of the fleece to crochet through
- Alternatively, you may want to crochet through existing edge stitching

